



FACULTAD DE
INGENIERÍA
UNIVERSIDAD DE SANTIAGO DE CHILE



GUIDE

**INTERNATIONAL
STUDENT**

CONTENTS

ARRIVAL TO CHILE

04

<i>Preparations</i>	<i>pág. 05</i>
<i>How do I get there?</i>	<i>pág.09</i>
<i>Necessary procedures</i>	<i>pág.11</i>

WELCOME TO USACH

12

<i>Visiting the university</i>	<i>pág. 08</i>
<i>What else can you do?</i>	<i>pág. 14</i>
<i>Classes already began.</i>	
<i>What should I know?</i>	<i>pág.18</i>

WELCOME TO SANTIAGO AND TO CHILE!

21

<i>What do you need to know about Chile?</i>	<i>pág. 25</i>
<i>What to visit in Chile?</i>	<i>pág.30</i>

00

01

ARRIVAL TO CHILE

02

PREPARATIONS

HEALTH INSURANCE

After receiving the confirmation of acceptance at USACH, you must obtain an insurance that covers the whole period of stay in Chile (that is, from your departure until your return), including the repatriation coverage. Keep the health insurance headquarters contact number in your cell phone, in order to always have access to that information.



VISA

You must complete the application for a Student Resident Visa in Chile. For this, you can visit the website of the Ministry of Foreign Affairs of Chile, in which is listed every [consulate](#) in the country. You must present the health insurance supporting document and the Acceptance Letter regarding your stay issued by the Universidad de Santiago.



ACADEMIC CALENDAR

In the university's website you will be able to download the [academic calendar](#).



TRAVEL ADVICE

Do not bring organic products or food. The **Agriculture and Livestock Service of Chile (SAG)** is extremely strict about the entry of fruit, seeds, grains, unprocessed products of animal origin, live or dead species of fauna, etc. If you have further questions, review the regulations.

Look for **the address and contact number of your country's consulate.** Remember their obligation is to assist and protect their compatriots in the face of any inconvenience.

Find out the cost of living in Chile by the time of your trip to prepare a suitable budget.

To enter Chile, no vaccination is required. Nonetheless, if you plan to travel to other countries of Latin America.

WEATHER

Keep in mind the climate and seasons in Santiago in order to bring appropriate clothing.

CLIMATE

SEASON FALL

DATE
March 20 to
Jun 21

AVERAGE TEMPERATURE
(MÍN-MÁX °C)

6°-18°C

COMMENTS
The lowest temperatures
are registered in the
morning and it starts to
rain in this season

SEASON WINTER

DATE
Jun 21 to
September 23

AVERAGE TEMPERATURE
(MÍN-MÁX °C)

2°-14°C

COMMENTS
Häufige Regenfälle und
manchmal Schnee. Die
Temperaturen können
unter 0 °C liegen.

SEASON SPRING

DATE
September 23 to
December 21

AVERAGE TEMPERATURE
(MÍN-MÁX °C)

8°-22°C

COMMENTS
Wide thermal variation
during daytime. Great
presence of allergens:
pollen, dust, etc.

SEASON SUMMER

DATE
December 21 to
March 20

AVERAGE TEMPERATURE
(MÍN-MÁX °C)

11°-29°C

COMMENTS
Dry heat, can reach
temperatures over 35°C.

Keep a copy of every important document you obtain since you might need them again (Acceptance Letter, Health Insurance, Visa, etc.). **It is also recommendable to have Passport size photos**, as they might be requested in some procedures.

HOW DO I GET THERE?

FROM THE **SANTIAGO AIRPORT**
(ARTURO MERINO BENÍTEZ)

01

Cab:

There are **official cabs** that can take you **from the airport to any place in Santiago**. The fare may vary depending on the distance and **should not exceed 20,000 CLP***

Therefore, we recommend you to previously ask about the price.

**30 USD.*

02

Transfer:

It is a **shared mean of transport** which **price varies according to the destination**, being around **3,000 and 8,000 CLP***

**5 a 12 USD.*

03

Bus:

There are **two bus companies**. The **ticket costs around 2,000 CLP** and they drop you in the subway station Los Héroes, in downtown Santiago.

Arrive a couple days before classes to recover from jetlag, get used to the transport system and climate.

Confirm your arrival to the International Alliances Unit (fing.international@usach.cl) and the Department of International and Inter-University Relations (<https://www.drii.usach.cl/>). In case of being in an exchange program for one semester, you must arrange a meeting with the inbound Student Mobility Program coordinator of DRII, to whom you must take your student visa and health insurance.

NECESSARY PROCEDURES

AFTER ARRIVING IN THE COUNTRY, YOU ALSO NEED TO CARRY OUT **TWO ESSENTIAL PROCEDURES.**

1 Register your visa

First, you must register your visa at the National Immigration Offices and International Police Bureau. For this, **you must show your passport, a certificate or supporting document from the consulate (if any), the address of the Universidad de Santiago de Chile (3363 Libertador Bernardo O'Higgins Street) and the address of where you will reside in Chile.**

COST: \$800 CLP

ADDRESS:

852 Eleuterio Ramírez.

Subway station: "Universidad de Chile" (Line 1)

PHONE NUMBER:

02-5657863

BUSINESS HOURS:

Monday to Friday 8:00 am to 02:00 pm

2 Obtain your Identification Card

After legalizing (or stamping) your visa, you must continue with the second procedure, which is obtaining your Chilean Identification Card (CI, for its abbreviation in Spanish). This procedure is carried out at any office of the Civil Registry and Identification Services. For this, **you must bring your passport with the stamped visa, the "Certificado de Registro de Visa", copy of both documents.**



COST:
\$4.050 CLP

01

02

WELCOME TO
USACH

03

WELCOME

You will arrive to the biggest single campus of the Metropolitan Region. With **170 years of teaching experience**, the university currently counts with a hundred different

undergraduate programs, **having their classes in buildings of high patrimonial value**. USACH has a unique identity reflected in the institution's mission:



“The Universidad de Santiago de Chile, permanent lead in the country’s progress, projects itself as an inclusive university community, a national and international excellence model, which is growing and developing in essential and pertinent areas, necessary for constructing a democratic, equitable and sustainable society.”



1. DRII

The Department of International and Inter-University Relations (DRII) is part of the Vice Presidency of Outreach and International Relations (Vicerrectoría de Vinculación con el Medio). Its mission is to strengthen, expand and deepen the international relations of the Universidad de Santiago de Chile. In addition, it seeks to promote initiatives to concertize the internal and external internationalization. It is the central unit in charge of the administrative procedures related to academic exchange.

2. Faculty of Engineering

The Faculty of Engineering was officially born in 1972 as a result of the union of the School of Arts and Crafts (1849) and the School of Industrial Engineers (1940). The Faculty is organized on the basis of a central administration, the Deanery and nine academic departments, besides special programs that develop their work covering practically all the areas of Engineering.

3. International Alliances Area

The International Alliances Area is part of the Vice Presidency of Outreach and International Relations of the Faculty of Engineering. With you as an international student, the area will carry out support tasks in processes inside the Faculty of Engineering, facilitating your integration and promoting your participation in other activities such as courses, talks or international schools.

You can contact us through: fing.international@usach.cl

<https://finginternacional.usach.cl/>

VISITING THE UNIVERSITY



Fernando Olmos Galleguillos
Coordinador movilidad
estudiantil entrante
fernando.olmos@usach.cl



Credential
Smart University

1 APP USACH MÓVIL

Download the [APP Usach Móvil](#), in which you will find the map of the CAMPUS.

It is also a **help and location application for students** of the University of Santiago de Chile (Usach).

2 COORDINADOR DE MOVILIDAD

Meet the Student Mobility Program Coordinator in charge of incoming students of the DRII, if necessary.

3 UNIVERSITY CARD

Obtain your university card. It will allow you to **access the different spaces of the university** and its laboratories, libraries or sports facilities.



4 NATIONAL STUDENT CARD (TNE)

Obtain your National Student Card (TNE, for its initials in Spanish), **which provides a reduction in the tariff of public transport**. To obtain it, **you need to be registered in the USACH and** have obtained your **National ID Card**, which gives you a Chilean Identification Number. If you meet the necessary requirements, you must approach the NSC Office (Oficina de la TNE) **located in Patio de los Naranjos at USACH**.

OFFICE HOURS:

Monday to Friday 8:00 to 14:00 | 15:00 to 17:00

BRING THE FOLLOWING DOCUMENTS:

- **Photocopy** of the registration receipt.
- **Deposit** receipt of the amount indicated in the NSC Office at USACH **to the bank account N°19.03580-8 (to the university) of Banco Santander**.
- **Photocopy of the ID Card**. You will be informed about the place and date to take a picture, if necessary.



National Student Card

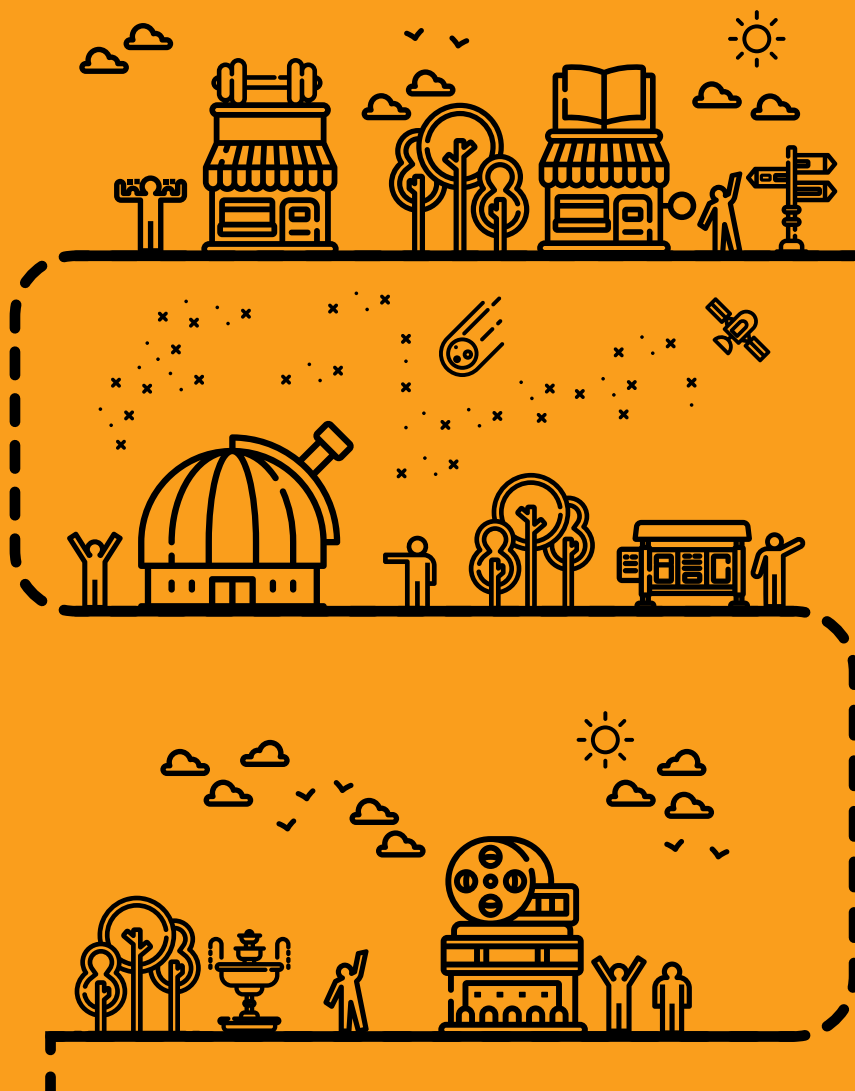
Remember that the NSC is a public, personal and non-transferrable document provided by the National Board for Student Aid and Scholarships (JUNAEB) and managed by Universidad de Santiago for their students. The processing might take some months, therefore, you should ask the Office staff if it is convenient to obtain it, depending on the modality of the exchange program.

5 PORTAL AND MAIL STUDENTS

- **Access** your USACH email in mail.usach.cl
- **Log in to the students'** portal of the USACH Faculty of Engineering. You can access [HERE](#).



WHAT ELSE CAN YOU DO?



1 The university counts with **sports equipment and libraries to which you can access as a USACH student**. If you like **artistic and cultural activities**, there is also a wide list of events developed in spaces of the campus and other sports and artistic courses given each semester. For further information, visit the section [university life](#).

2 One of the most characteristic elements of the Universidad de Santiago is the [Planetarium](#). Inside the dome there are **three rooms in which there are different performances using sophisticated technology** to give a little more information about the universe.

3 Each week at [Sala Estación Usach](#), **films with a later conversation space are exhibited where the public**, together with academics, film specialists and filmmakers can deepen and comment on the films, and their creative and technical processes. **All functions are at 7:00 p.m. with admission released**, admission is by order of arrival and with a **maximum capacity of 80 people** room capacity. Sala Estacion is located inside the Vice-Rectorry of Linking with the Middle U. of Santiago in: **175 Las Sophoras, Estación Central**.



PLANETARIO
DE LA UNIVERSIDAD DE
SANTIAGO DE CHILE

CLASSES ALREADY BEGAN. WHAT SHOULD I KNOW?



a) Class attendance policy

If you plan to travel during your stay in Chile, it is necessary that you take into account the minimum percentage of attendance to pass each course, do not schedule your trips during the exam period and always notify your teacher of the absence.

b) Reglamento General

We recommend you to review attendance policy for undergraduate students [HERE](#).

This regulation establishes the general rules of organization and operation of the Faculties of the USACH.



S-1

- 1 Estadio Usach
- 2 Camarines
- 3 Canchas de Tenis
- 4 Casa del Deporte
- 5 Jardín Infantil

S-2

- 6 Facultad Tecnológica
- 7 Departamento de Ingeniería Industrial
- 8 Escuela de Artes y Oficios
- 9 Aula Magna
- 10 Departamento Obras Civiles
- 11 Vicerrectoría de Gestión y Desarrollo Estudiantil
- 12 Federación de Estudiantes Usach
- 13 Departamento de Deportes - Piscina Temperada

S-3

- 14 Complejo Informático Salón Búlnes
- 15 Centro de Salud
- 16 Departamento de Desarrollo de Talentos Artísticos
- 17 Departamento Ingeniería Eléctrica
- 18 Departamento Física
- 19 Biblioteca Central

S-8

- 45 Escuelas de Periodismo y Psicología
- 46 Edificio Programa Bachillerato
- 47 Edificio CECTA
- 48 Escuela de Arquitectura
- 49 Departamento de Filosofía y Educación

S-7

- 35 Facultad de Humanidades
- 36 Facultad de Química y Biología
- 37 Facultad de Ingeniería
- 38 Departamento de Ingeniería Química
- 39 Edificio CITE CAMP
- 40 Departamento de Ingeniería Mecánica
- 41 Centro de Eventos Nacionales e Internacionales
- 42 Facultad de Ciencias Médicas - Laboratorio y Salas de Clases
- 43 Departamento Ingeniería en Minas ex ENAMI
- 44 Salas de Clases - Nuevo Mundo

S-6

- 30 Casa Central
- 31 Biblioteca Facultad Humanidades
- 32 Radio Usach
- 33 Sala Cuna
- 34 Paraninfo - Salas de Clases

S-5

- 24 Facultad de Administración y Economía
- 25 Pabellón Salas de Clases
- 26 Servicio de Gestión Informática y Computación
- 27 Registro Académico
- 28 Facultad de Ciencias Médicas Decanato
- 29 Laboratorio de Computación FAE - Salón CAP

S-4

- 20 Departamento de Ingeniería Geográfica
- 21 Dirección de Finanzas
- 22 Edificio Fundación Planetario
- 23 Edificio Administrativo Ecuador 3412

02

03

WELCOME TO
SANTIAGO AND TO CHILE!

04

WHAT DO YOU NEED TO KNOW ABOUT CHILE?

General description of the country

LANGUAGE

The official language is **Spanish**, but in the territories with predominance of indigenous population it is also spoken **Mapudungun, Aymara, Quechua** or **Rapa Nui**.

RELIGION

The **prevailing religion in Chile is Catholicism**, although Evangelicalism, the Church of Jesus Christ of Latter-day Saints, Judaism and Islam, among others, are also present

GOVERNMENT

Chile's government is a presidential system, with **three independent branches: Legislative, Executive and Judicial**. Regarding the administrative divisions, the territory is **divided into 15 regions**, which are, in turn, **subdivided in communes**, whose **administrative organ are municipalities**.



| Torres del Paine



| Embalde del Yeso

CURRENCY

Chilean peso. There are coins of 10, 50, 100 and 500 pesos, and bills of 1,000, 2,000, 5,000, 10,000 and 20,000 pesos. You can check the updated exchange rate in the website of the Central [Bank of Chile](#).

CLIMATE

The country's climate varies greatly due to the extension of the territory. In general, towards the North, temperatures are higher and the climate is drier, while to the South temperatures are lower and humidity increases. It is possible to appreciate that, for example, in the far North there are some places with desert weather, while in the far South the weather is more similar to polar climate, and in Easter Island there is a humid subtropical climate.

VOLTAGE

In Chile, the standard **voltage is 220 V and frequency is 50 Hz**. Sockets and plugs are of **type C and L**.

TIME

In Chile, **time changes twice a year: at the beginning of fall and at the beginning of spring**, therefore the difference in the time zone can be of **GMT -3 or GMT -4**.

CALENDARIO FERIADOS

En Chile los principales feriados o días no laborales son:

01

JANUARY

New Year

01

MAY

Labor Day

21

MAY

Navy Day

29

JUNE

*Saint Peter and
Saint Paul*

16

JUNE

*Our Lady of
Mount Carmel*

15

AUGUST

*Assumption
of Mary*

18/19

SEPTEMBER

*Independence Day and
Days of the Glories of
the Chilean Army*

31

OCTOBER

Reformation Day

01

NOVEMBER

All Saints' Day

08

DECEMBER

*Immaculate
Conception Day*

25

DECEMBER

Christmas



Seismic Waves

Chile is a seismic country due to its location at the border of the Nazca plate, which converges with the South American plate, accumulating energy that needs to be released through tremors or earthquakes. Many of these occur on a daily basis but are imperceptible because of their low magnitude and depth. However, there are others that reach the magnitude of earthquakes.

What are the safety measures to take?

Stay away from any object that might fall over, like furniture or glass in enclosed spaces, and posts or cables in open spaces.

The most important thing is to stay calm, since Chilean people and buildings are prepared for any type of seismic wave.

Tobacco Control Law

The law states that it is **prohibited to smoke in enclosed public spaces. These include pubs, nightclubs, restaurants, shopping centers, universities, hospitals, etc.** Additionally, some municipalities of Santiago, such as Las Condes, have recently established internal regulations that prohibit smoking in parks and public squares.

Alcohol Law

It is **prohibited to consume** alcoholic beverages **in public and circulate in public inebriated.**

Drug Law

Drug **possession and consumption** is **prohibited.**

Economy and Banking System

1 CREDIT CARDS

In general, **there is a mass use of credit and debit cards**. When travelling, try to carry cash, since some small towns and cities might not count with card systems.

2 BANKS

Opening hours for Banks are from 9 a.m. to 2 p.m. from Monday to Friday. Besides, there are ATMs in pharmacies, shopping centers and subway stations, which work according to the business hours of the place they are located in; but they work 24 hours a day in banks. If you are going to use an international card, you must identify the ATMs that accept your card.

3 STORES

In general, businesses **open from Monday to Sunday from 10 a.m. to 6 p.m. or 8 p.m. in Santiago.** However, in some cities or towns from other regions, opening hours are interrupted from around 2 p.m. to 4 p.m.

4 TIPPING ETIQUETTE

In Chile it **not an obligation to tip waiters**, but it is customary and restaurants or bars **usually include it in the check**. It corresponds to **10% of the total amount**.



Connectivity

Internet connection and phone service are accessible throughout the whole country, **with a good 4G coverage**. It is possible that in some towns in extreme regions of Chile the service is not optimal, which is why you must make sure that your family knows your travel itinerary.

Transporte

Transport throughout the country is mainly by **bus, by car or by airplane**. There are few train networks for passengers, but there are still some of them, which travel mainly to the South. You can also find sea transportation by ferry. To take any of these means of transport you must approach the corresponding bus station, airport or harbor. **Some companies sell tickets on their websites**, which is recommended especially for trips during holidays or peak season.

To move around in Santiago, there is the **Red Metropolitana de Movilidad (Metropolitan Transportation System, former Transantiago)**, which includes the Metro (subway), buses and MetroTren Nos (rail service) tariffs using the BIP! Card. You can buy this prepaid card in the different metro stations.

Buses' schedules and timing are variable. **You can check** the arrival of each line stop indicating the stop in the **Official App of Transantiago**. In relation to the subway, there is an established Schedule from 6 a.m. to 11 p.m. approximately, which you can check [HERE](#).

Plano Red Metro de Santiago



Safety

Do not show off valuable objects. Do not hang your carry-on bag or backpacks from the seat-back in restaurants or cafés. Do not go for walks at night in lonely places. Do not exchange money on the streets. Do not bring your passport everywhere, only a photocopy.

In case you have a serious legal problem or any other kind, you must demand the consular office of your country to fulfill their obligation to assist and protect you. Similarly, the Chilean government must allow you to contact the consular mission of your country.

If you have any other problem of lost or stolen passport, you must inform the Chilean police force (Carabineros) at the police station that is closer to the place of the events. If you lost your passport, you must also inform the Alien Status and Immigration Department and, then, request a new one in Embassy of your country.

If you lose your registration card or Tourist Card, you need to request a duplicate at an International Police Office.



133
POLICE
(CARABINEROS)



131
AMBULANCE



132
FIRE



134
CHILEAN INVESTIGATIVE
POLICE SERVICE (PDI)



Papayas | Marca Chile



Empanada de pino | Paulina Briones Montaldo



Dulces la ligua | Marca Chile



Cazuela de Pollo | Paulina Briones Montaldo

Food

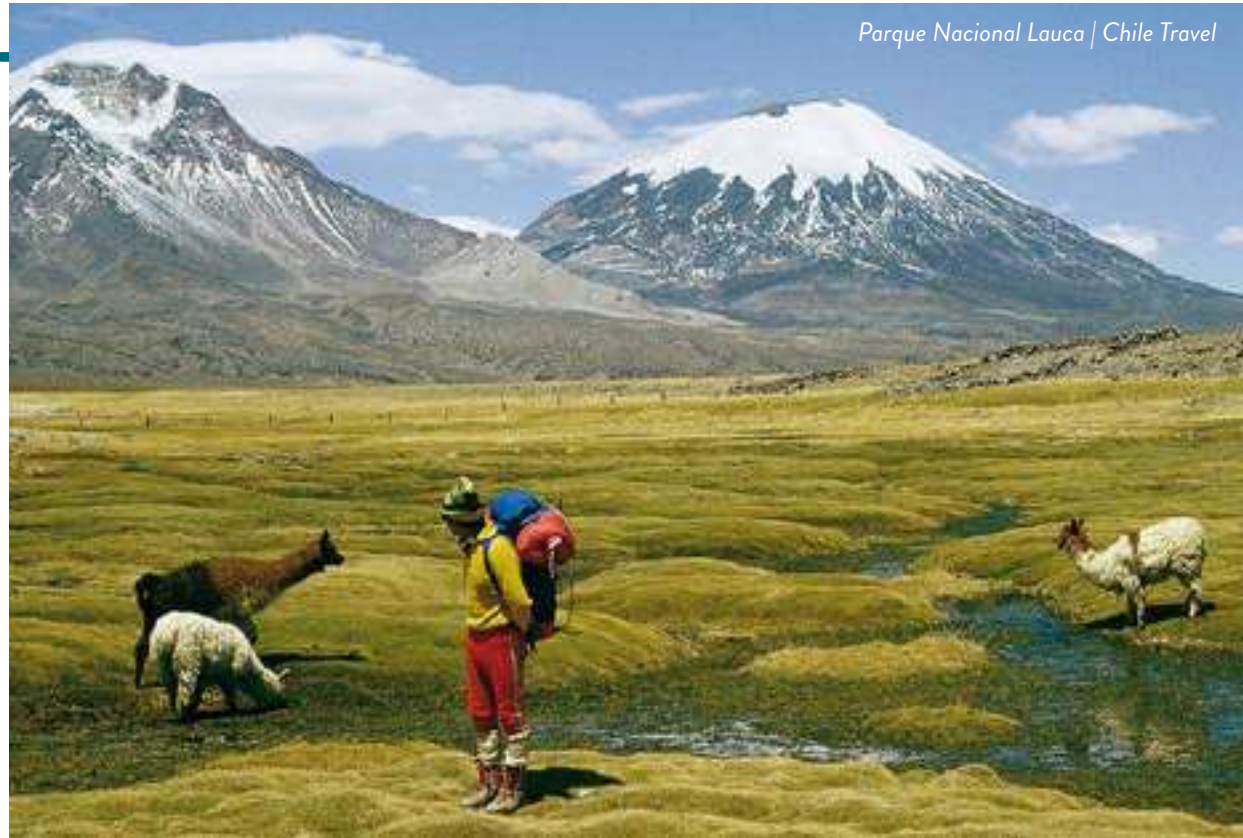
Quantity of meals, types of food and precautions to take Food kindness (papaya, eggfruit, *manjar*, shellfish, wine, marraqueta, etc.). Typical dishes: *cazuela* (Chilean stew), *curanto* (clambake), *choripán* (Chilean chorizo sándwich), *terremoto* (Chilean drink), pastel de choclo (baked meat and corn pie), *chorrillana* (sautéed meat, onions and melted cheese over French fries), *empanadas*, *humitas* (steamed mashed corn wrapped in cornhusks), *completes* (Chilean hot-dog), *mote con huesillo* (wheat with cooked dried peaches).

WHAT TO VISIT CHILE?

For general tourist information, visit the website of the National Tourism Service ([SERNATUR](#)) and the tourism website [Chile Travel](#).

Arica

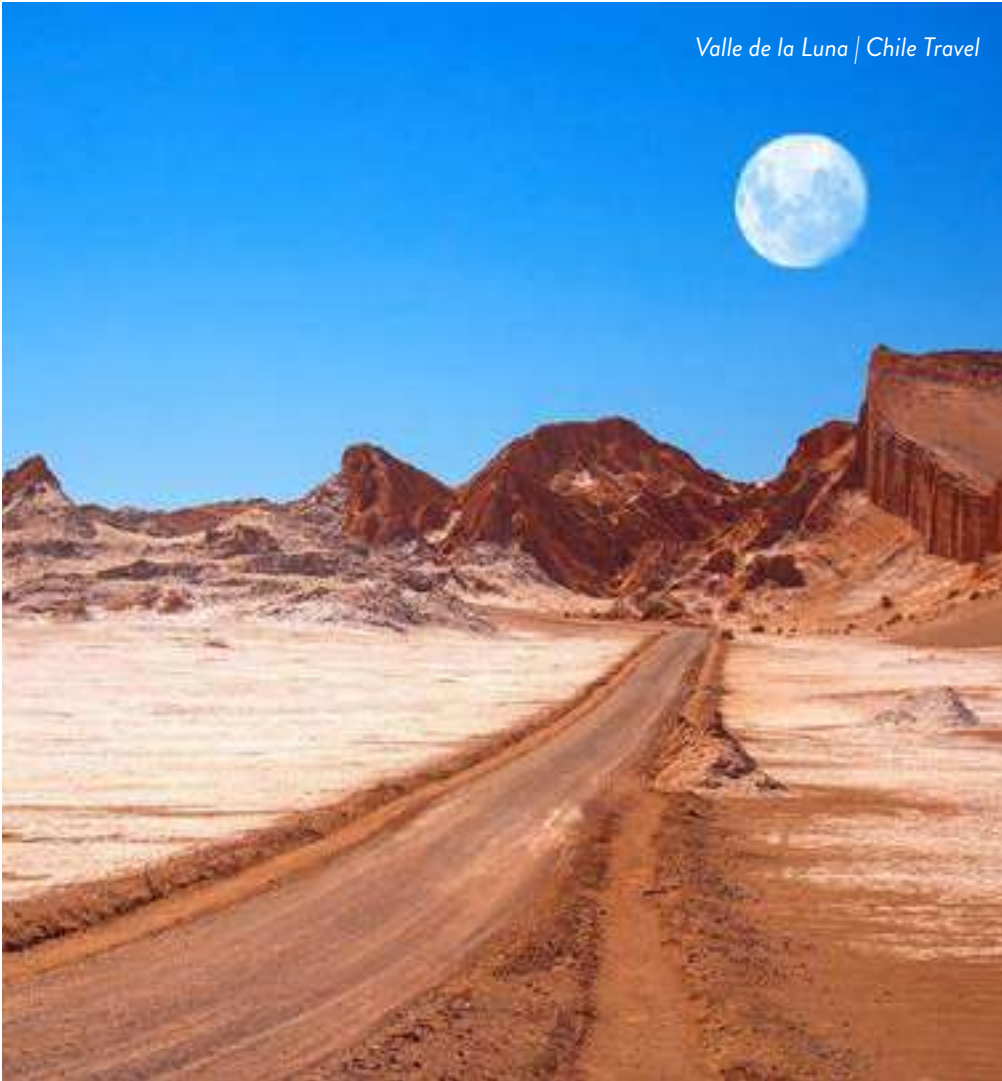
It is known as "The City of Eternal Spring" for its pleasant weather, the surrounding fertile valleys and its beautiful mild beaches ideal for practicing water sports. Visiting Arica allows you to get closer to the cultural diversity of the frontier with Peru, sunk in the Andean and coastal culture.



Parque Nacional Lauca | Chile Travel



Lago Chungara | Flickr Esteban Medina



San Pedro de Atacama

The most similar thing to the moon: salt flats, volcanoes, geysers and thermal baths. On the way to the Andes Mountains, in the middle of the desert is this place that still preserves the culture of the Atacama people.

Valparaíso

Do you like uncontrollable culture, street art and unconventional ports? Valparaíso is the ideal place for you. You will fall for its hills with colorful houses and sea view, where you will find the best bars and gourmet restaurants.





Torres del Paine National Park

The Torres del Paine massif or mountain chain was declared the eighth wonder of the world. Its granite horns, turquoise water and glaciers provide to this landscape a Patagonian and polar environment, which you can traverse in different trekking circuits.

Pucón

With the volcano and the Villarrica Lake, this city delights you with the landscape and adventure sports that the environment offers. The amazing Pucón-Villarrica ski center, hot springs, waterfalls and rafting are some of the attractions in this city.

Ojos del Caburgua | Chile Travel



Easter Island

The culture of the Rapa Nui people is unique. With the unsolved mystery about the construction of over a thousand moai statues, the island mixes magic and tradition, creating an oasis in the middle of the Pacific Ocean.



¡WELCOME!





<https://finginternacional.usach.cl>



FACULTAD DE

INGENIERÍA

UNIVERSIDAD DE SANTIAGO DE CHILE